



ICOMOS ICAHM
International Committee
on Archaeological
Heritage Management



2018 ICAHM Annual Meeting

Accommodations in Montalbano Elicona - walking distance from the conference venue

B&B Dolmen House

Location: Montalbano via Provinciale Centro 107, Montalbano Elicona
Distance from the castle: 500 metres
Wifi: Yes
Elevator: No
Stairs: Yes
Kitchen: Yes, 1 kitchen in each apartment
Breakfast: Yes

*Local tax € 1,50 per person, per night to be paid locally in hotel.

Room Types:

APARTMENT 1

3 double/twin bedrooms, each with lockable bedroom door and ensuite bathroom
Shared kitchen
TV

Bedroom 1: €79 per bedroom (1 or 2 people) **SOLD OUT**

Bedroom 2: €79 per bedroom (1 or 2 people) **SOLD OUT**

Bedroom 3: €79 per bedroom (1 or 2 people) **SOLD OUT**

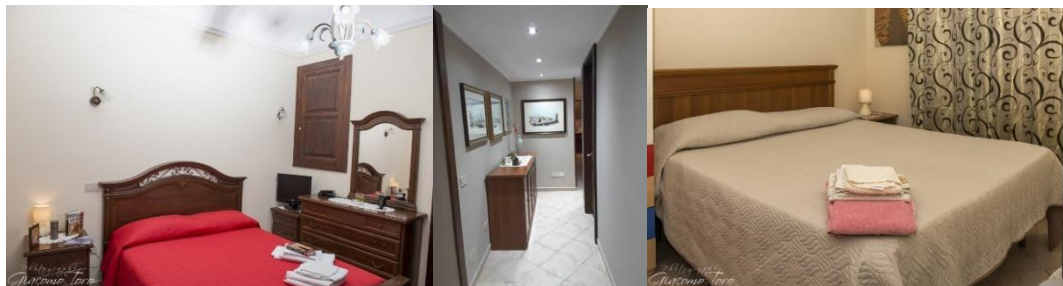
APARTMENT 2

Bedroom 1: 1 double/twin bedroom with lockable bedroom door and private bathroom (but is not within bedroom)
Bedrooms 2 & 3: 2 double/twin bedrooms with lockable bedrooms and shared bathroom
Shared kitchen
No TV

Bedroom 1: €68 per bedroom (1 or 2 people) **SOLD OUT**

Bedroom 2: €56 per bedroom (1 or 2 people) **SOLD OUT**

Bedroom 3: €56 per bedroom (1 or 2 people) **SOLD OUT**



B&B Casa Sofia SOLD OUT

Location: Musumeci St 1, Montalbano Elicona
Distance from the castle: 100 metres
Wifi: Yes
TV: Yes
Elevator: No
Stairs: Yes, apartment on the 1st floor
Kitchen: Yes
Breakfast: Yes
Room Type: 1 double bedroom with bathroom, living room, balcony
Apartment is 55 sq meters

Orante €101 per night (entire Apartment)

*Local tax € 1,50 per person, per night to be paid locally in hotel.



B&B San Nicolo SOLD OUT

Location: Via Mastropaolo 49, Montalbano Elicona
Distance from the castle: 50 metres
Room Types: 1 double room /private bathroom
Wifi: Yes
TV: Yes
Elevator: No
Stairs: Yes
Kitchen: Yes, shared with 5 bedrooms
Parking: Yes, in the nearby square
Room Types: 1 double bedroom with lockable bedroom door and ensuite bathroom

Upstairs, Bedroom 1: €79 per bedroom as double occupancy; € 50,50 per bedroom as single use

Upstairs, Bedroom 2: €79 per bedroom as double occupancy; € 50,50 per bedroom as single use

Upstairs, Bedroom 3: €79 per bedroom as double occupancy; € 50,50 per bedroom as single use

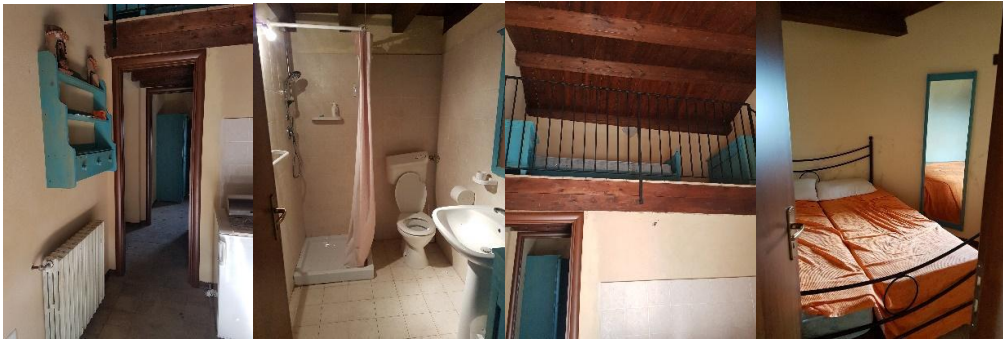
*Local tax € 1,50 per person, per night to be paid locally in hotel.



“Medieval Resorts”

Location: Serro district, Montalbano Elicona
Distance from the castle: 5 minute walk
Wifi: Yes
Kitchen: Small kitchenette
Breakfast: Yes, served at nearby ‘Casa Faranda’
Room Types:

- LANCILLOTTO: ground floor and mezzanine - one room with a **double bed** / one room with a **single bed** / mezzanine with a **single bed**. Bathroom with shower / kitchenette
€ 168,00 per night (entire apartment: 1 to 4 people) SOLD OUT



- MEDUSA: ground floor and mezzanine with **two single beds** / bathroom with shower / kitchenette
€ 90,00 per night (entire apartment: 1 to 2 people) SOLD OUT



- MITRA – ground floor and first floor with **two single beds**. Bathroom with shower
€ 90,00 per night (entire apartment: 1 to 2 people) SOLD OUT



- MOROS – ground floor and first floor with **one single bed**. Bathroom with shower
€ 56,00 per night (entire apartment: 1 person) **SOLD OUT**



- MINERVA - ground floor and first floor with **one single bed**. Bathroom with shower
€ 56,00 per night (entire apartment: 1 person) **SOLD OUT**



- MUSE – ground floor with **one single bed**. Bathroom with shower
€ 56,00 per night (entire apartment: 1 person) **SOLD OUT**



- OFELIA – ground floor, first floor and second floor – **one double bed**. Bathroom with shower
 € 90,00 per night (entire apartment: 1 to 2 people) **SOLD OUT**



- ORFEO – ground floor and first floor – **three single beds** in one room. Bathroom with shower
 € 112,00 per night (entire apartment: 1 to 3 people)



- OTELLO – ground floor, first floor and second floor – one room with **one double bed** and **one single bed** / one room with **one single bed**. Bathroom with shower
 € 168,00 per night (entire apartment: 1 to 4 people) **SOLD OUT**

